

NOKE LED LIGHTING TECH LIMITED

ADD: 4/F, Building A, Xueziwei Industrial Zone, Shajing Town, Bao-an District, Shenzhen, China
TEL:+86-755-29197483 Mobile:+86-13267241094 FAX: +86-755-29197480
EMAIL: sales02@nokeled.com WEBSITE: www.nokeled.com

DATASHEET FOR NK-GLWF4-40W08 LED Grille Light

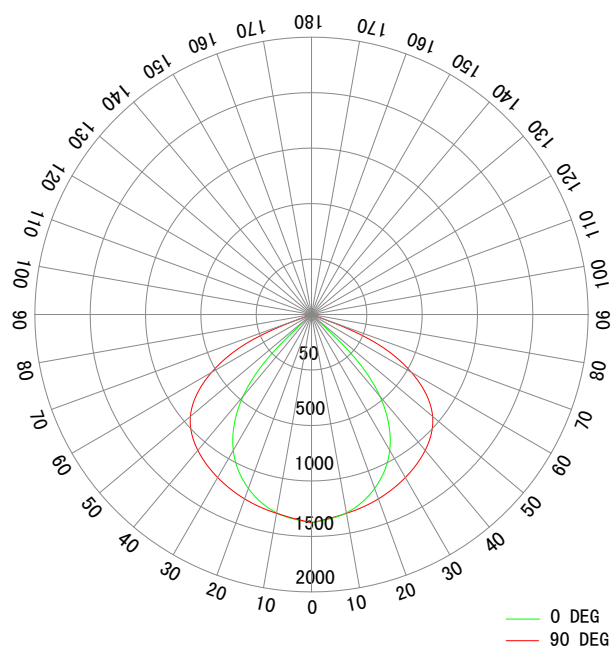
Special Features:

- 1, Luxurious metal structure, compliant with universal size of the light steel frame in the ceiling.
- 2, SMD 2835 LEDs, high brightness, low light dissipation, can be up to 50,000 hours.
- 3, Stable light source, no flicker, No UV or IR radiation, good for eye.
- 4, Built-in driver, Small size. High-precision constant current to ensure the LEDs working security and stability.
- 5, Driver with CE certificates and the whole product compliant with CE and RoHS certificates.

Technical Parameter:

Item No.	Main Parameter	
NK-GLWF4-40W08	LED power	2*19 T8
	Driver	CE driver
	Consumption power	≤45W
	Input voltage	100-240V
	Working frequency	50-60Hz
	Luminous flux	4100-4500Lm
	LED quantity	SMD 2835
	Power factor	>0.92
	CRI	>82
	Color temperature (CCT)	cool white (5500-6500K) Pure white (4000-5000K) warm white (2700-3200K)
	Working temperature	-20~+40℃
	Reserve temperature	-20~+80℃
	Size	1198mm*298mm*90mm
	Package	2pcs/ctn
	Carton Size	1260*190*330mm
GW./CTN	13.5KGS	

Light source and light intensity distribution(Horizontal installation)



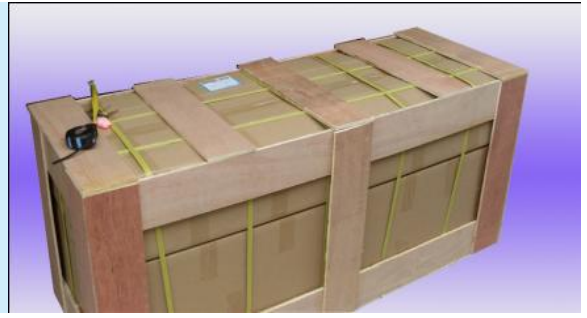
Details of product:



Packing details :



Quantity: 2PCS



Caution & Warning

1. Used indoor or someplace where no water.
2. Work under the fixed voltage.
3. Pls operate in the right way when you install the LED Grille light in case to avoid the power harm and body harm. When installing, please note the short-circuit protect such as the socket with the fuse.
4. If any doubt about the installation or use of this product, consult a competent electrician or technician .

Application:



- 1, Office building lighting
- 2, Hotel lighting
- 3, Super market lighting
- 4, Warehouse market lighting
- 5, Airport lighting
- 6, Factory lighting